



**POST CLEANING REPORT FOR THE
CLEANING OF THE SUPPLY AND EXTRACT
DUCTWORK SYSTEMS (AHU 2, 3 AND 4) SERVING
THE EMERGENCY DEPARTMENT AT SITE NAME**

CONDUCTED ON BEHALF

OF:

CLEANING CONDUCTED BY:

Mr Liam Williams
Supervisor for Ductbusters Ltd
on 12/11/2018 to 15/11/2018

REPORT PREPARED BY:

Mr Alan Wedge
Surveyor for Ductbusters Ltd
on 20/11/2018



CONTENTS

1. SCOPE OF WORKS
2. PHOTOGRAPHS
3. D.T.T TEST RESULTS
4. CONCLUSION

1.0 SCOPE OF WORKS

Ductbusters were contracted to carry out the Deep Cleaning and Disinfection of AHU's 2, 3 and 4 Supply and Extract Ductwork Systems Serving the Emergency Department at SITE NAME.

This Post Cleaning report is to outline and to place on record visual (photographic) results to show the difference to the cleanliness of the System before and after Ductbusters Ltd cleaning works were carried out on the 12/11/2018 to 15/11/2018.

2.0 PHOTOGRAPHS



AHU BEFORE CLEANING



AHU AFTER CLEANING



AHU BEFORE CLEANING



AHU AFTER CLEANING



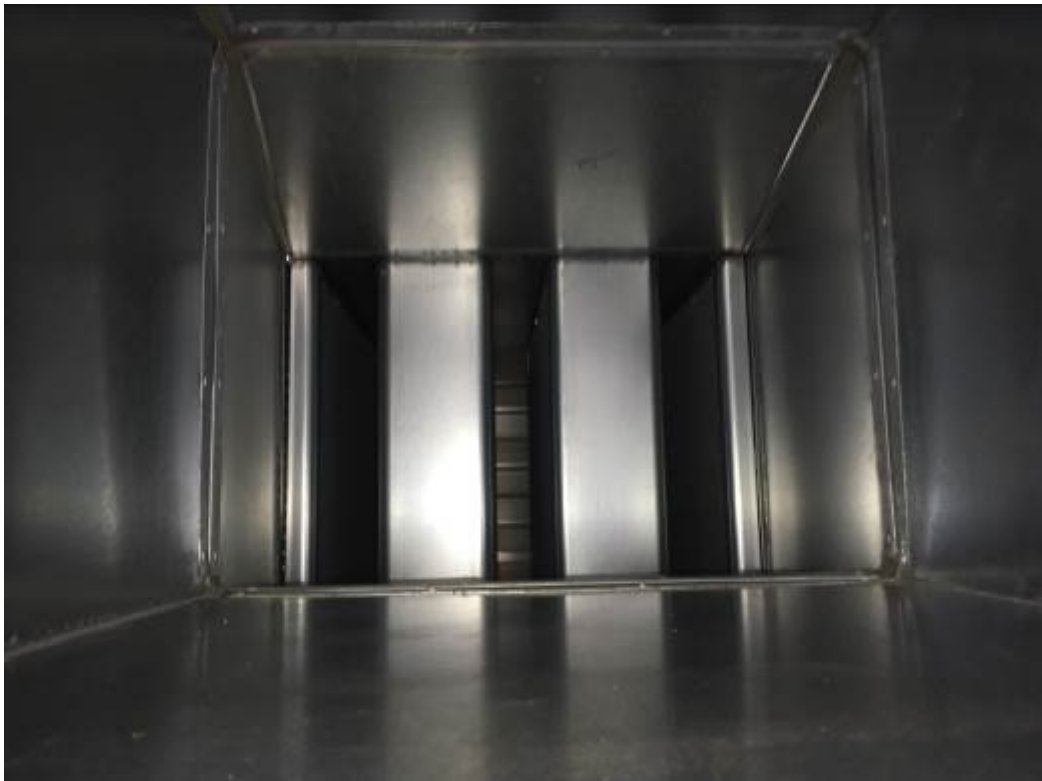
AHU BEFORE CLEANING



AHU AFTER CLEANING



AHU BEFORE CLEANING



AHU AFTER CLEANING



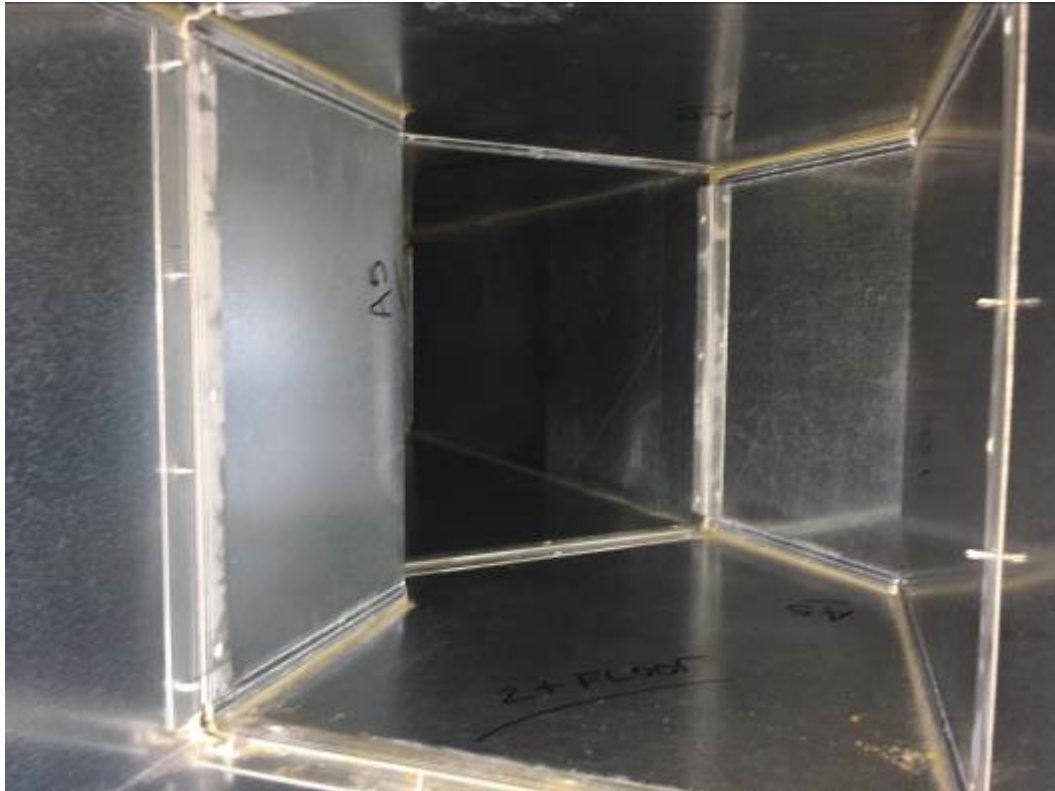
DUCTWORK BEFORE CLEANING



DUCTWORK AFTER CLEANING



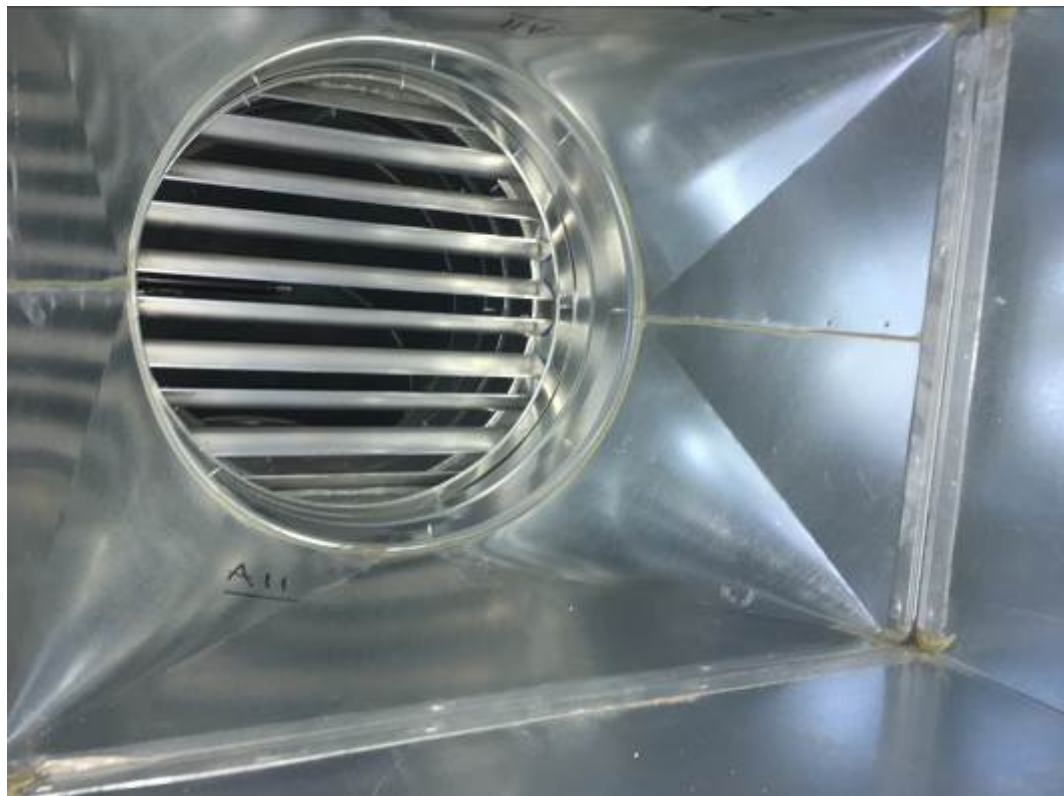
DUCTWORK BEFORE CLEANING



DUCTWORK AFTER CLEANING



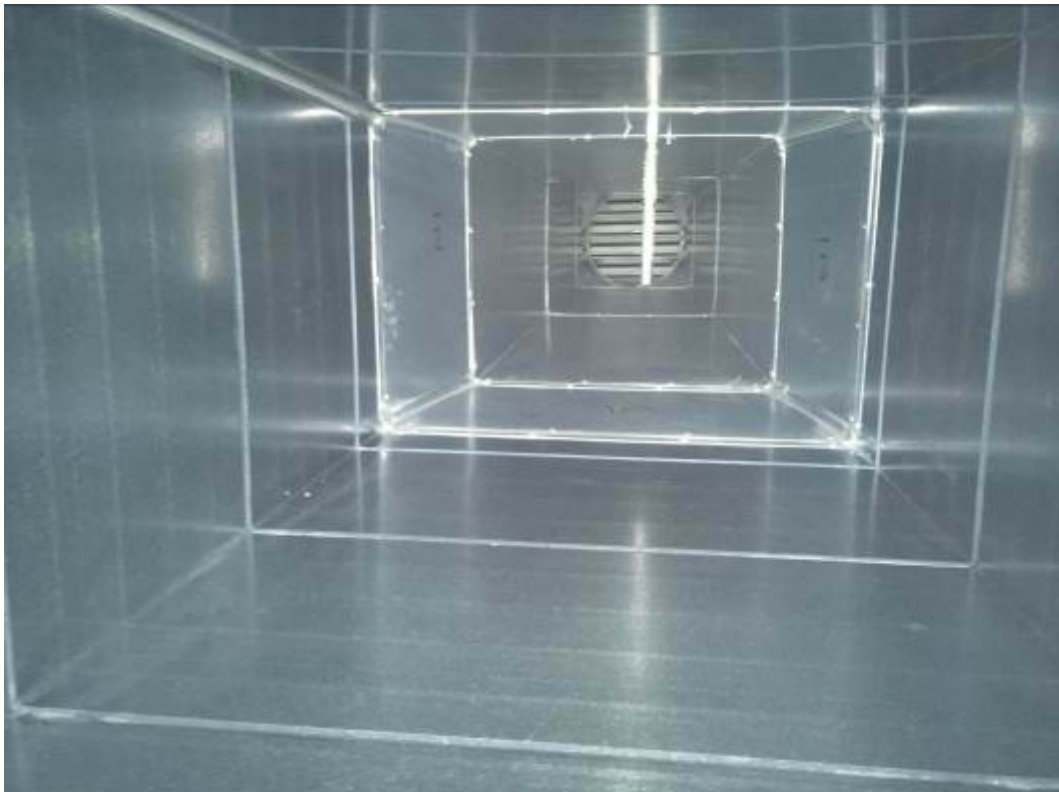
DUCTWORK BEFORE CLEANING



DUCTWORK AFTER CLEANING



DUCTWORK BEFORE CLEANING



DUCTWORK AFTER CLEANING



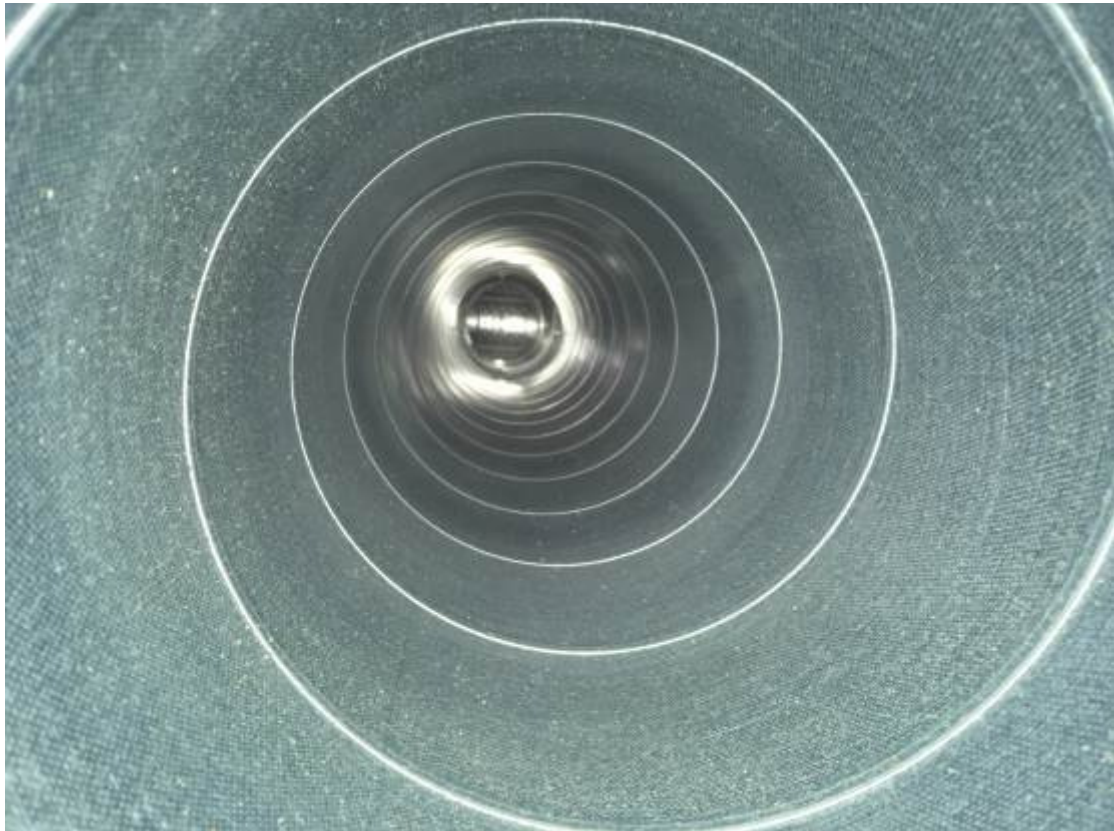
DUCTWORK BEFORE CLEANING



DUCTWORK AFTER CLEANING



DUCTWORK BEFORE CLEANING



DUCTWORK AFTER CLEANING



DUCTWORK BEFORE CLEANING



DUCTWORK AFTER CLEANING

3.0 D.T.T TEST RESULTS

All D.T.T tests were taken by Liam Williams from the internal surfaces of the ductwork where accessible within arm's reach after cleaning.

Location	DTT Reading (µm)	TR19 Limit (µm)	Satisfactory
Existing AHU	5.49	12	Yes
Existing Extract Duct	17.88	180	Yes
New Supply Duct Majors	6.26	12	Yes

4.0 CONCLUSIONS

As the photographs portray there is a difference in the recorded dust and contaminants build up between the before and after cleaning of the Supply and Extract ductwork. As the results show, the test results were well within the limit of a High classification.

TR/19 Table 7 Acceptable Duct Accumulation Levels in Existing Ductwork

Cleanliness Quality Class	Acceptable dust accumulation level for Supply Ductwork		Acceptable dust accumulation level for Re-circulation or Secondary Air Ductwork		Acceptable dust accumulation level for Extract Ductwork	
	D.T.T	PVT	D.T.T	PVT	D.T.T	PVT
Low	90µm	<4.5 g/m ²	120µm	<6.0 g/m ²	180µm	<9.0 g/m ²
Medium	60µm	<3.9 g/m ²	90µm	<4.5 g/m ²	180µm	<9.0 g/m ²
High	12µm	<0.6 g/m ²	60µm	<3.0 g/m ²	180µm	<9.0 g/m ²

We would recommend that the cleaning works are now to be incorporated into the regular maintenance programme

By implementing strict monitoring and maintenance it shall enable the systems to remain in the highest possible standard and you will reduce the cleaning periods.

Regular maintenance of the filter system to a good standard will eliminate particle levels leaking through into the system.